

PRODUCT INFORMATION PACKET

Model No: 056C17F5324

Catalog No: F101

0.33 HP General Purpose Farm Duty Motor, 1 phase, 1800 RPM, 115/208-230 V, 56 Frame, TEFC
Single Phase Farm Duty Motors



Regal and Marathon are trademarks of Regal Beloit Corporation or one of its affiliated companies.
©2020 Regal Beloit Corporation, All Rights Reserved. MC017097E

REGAL



Nameplate Specifications

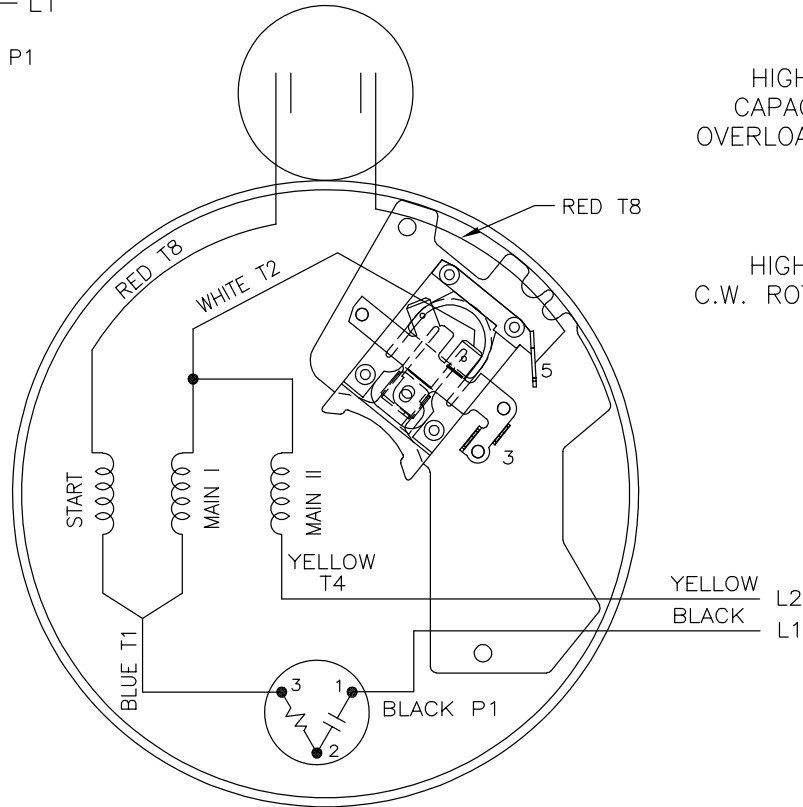
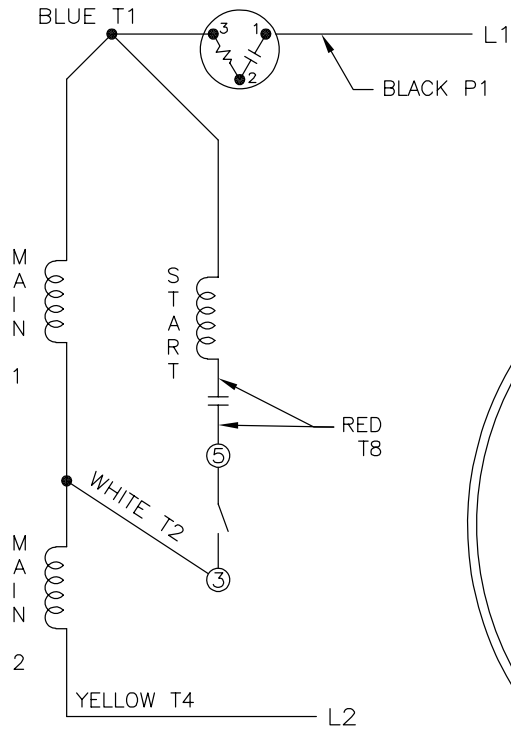
Output HP	0.33 Hp	Output KW	0.25 kW
Frequency	60 Hz	Voltage	115/208-230 V
Current	6.6/3.1-3.3 A	Speed	1725 rpm
Service Factor	1.15	Phase	1
Efficiency	55 %	Power Factor	60
Duty	Continuous	Insulation Class	B
Design Code	L	KVA Code	R
Frame	56	Enclosure	Totally Enclosed Fan Cooled
Thermal Protection	Manual	Ambient Temperature	40 °C
Drive End Bearing Size	6203	Opp Drive End Bearing Size	6203
UL	Recognized	CSA	Y
CE	N	IP Code	43

Technical Specifications

Electrical Type	Capacitor Start Induction Run	Starting Method	Across The Line
Poles	4	Rotation	Selective Counterclockwise
Resistance Main	0 Ohms	Mounting	Rigid Base
Motor Orientation	Horizontal	Drive End Bearing	Ball
Opp Drive End Bearing	Ball	Frame Material	Rolled Steel
Shaft Type	NEMA 56	Overall Length	11.82 in
Frame Length	6.56 in	Shaft Diameter	0.625 in
Shaft Extension	2.32 in	Assembly/Box Mounting	F1 ONLY
Outline Drawing	A-100137-656	Connection Drawing	A-102005-52

This is an uncontrolled document once printed or downloaded and is subject to change without notice. Date Created:14/10/2020

HIGH VOLTAGE - C.W.



HIGH VOLTAGE
CAPACITOR START
OVERLOAD - C.W. FIXED

HIGH VOLTAGE
C.W. ROTATION SHOWN

			TOLERANCES UNLESS SPECIFIED			DRAWN	PVR	03/18/14			
			DEC.	INCHES		CHK	SM	03/18/14			
			.X	±.1		APPD					
			.XX	±.02	TITLE	CONNECTION DIAGRAM	SCALE	5=8			
			.XXX	±.005			REF	EXME140343			
			.XXXX	±.0005	MAT'L.		FMF	56C28D15508			
NO.	REVISION	BY & DATE	CHK	ANG	±7'30"	FINISH	PREV				
THIS DRAWING IN DESIGN AND DETAIL IS OUR PROPERTY AND MUST NOT BE USED EXCEPT IN CONNECTION WITH OUR WORK ALL RIGHTS OF DESIGN AND INVENTION ARE RESERVED THIS IS AN ELECTRONICALLY GENERATED DOCUMENT - DO NOT SCALE THIS PRINT			RFP	CAD FILE		102005-152	SIZE	DRAWING NO.	PAGE	OF	REV.
			DIST	WP			A	102005-152			

CERTIFICATION DATA SHEET

Model#: 56C17F5324 H WINDING#: ZC406 NONE 3
 CONN. DIAGRAM: A-102005-52 ASSEMBLY: F1 ONLY
 OUTLINE: A-100137-656

TYPICAL MOTOR PERFORMANCE DATA

HP	KW	SYNC. RPM	F.L. RPM	FRAME	ENCLOSURE	KVA CODE	DESIGN				
1/3	0.25	1800	1725	56	TEFC	N	L				
PH	Hz	VOLTS	FL AMPS	START TYPE	DUTY	INSL	S.F	AMB°C	ELEVATION		
1	60	115/208-230	6.6/3.1-3.3	ACROSS THE LINE	CONTINUOUS	B3	1.15	40	3300		
FULL LOAD EFF: 55		3/4 LOAD EFF: 50.5		1/2 LOAD EFF: 43.2		GTD. EFF		ELEC. TYPE		NO LOAD AMPS	
FULL LOAD PF: 60		3/4 LOAD PF: 50		1/2 LOAD PF: 42.7		0		CAP START IND RUN		5.6 / 2.8	
F.L. TORQUE		LOCKED ROTOR AMPS		L.R. TORQUE		B.D. TORQUE		F.L. RISE°C			
16 LB-FT		32.4 / 16.2		55.7 LB-FT 348		44.6 LB-FT 279		53			
SOUND PRESSURE @ 3 FT.		SOUND POWER		ROTOR WK^2		MAX. WK^2		SAFE STALL TIME		STARTS /HOUR	APPROX. MOTOR WGT
0 dBA		10 dBA		0 LB-FT^2		0 LB-FT^2		10 SEC.		0	0 LBS.

*** SUPPLEMENTAL INFORMATION ***

DE BRACKET TYPE	ODE BRACKET TYPE	MOUNT TYPE	ORIENTATION	SEVERE DUTY	HAZARDOUS LOCATION	DRIP COVER	SCREENS	PAINT
STANDARD	BRAKE	RIGID	HORIZONTAL	FALSE	NONE	FALSE	NONE	GRAY (POWDER)

BEARINGS		GREASE	SHAFT TYPE	SPECIAL DE	SPECIAL ODE	SHAFT MATERIAL	FRAME MATERIAL
DE	OPE						
BALL	BALL	POLYREX EM	T	NONE	NONE	1144 STRESSPROOF (C-223)	ROLLED STEEL
6203	6203						

THERMO-PROTECTORS				THERMISTORS	CONTROL	SPACE /n HEATERS
THERMOSTATS	PROTECTORS	WDG RTDs	BRG RTDs			
NONE	MANUAL	NONE	NONE	NONE	FALSE	NONE VOLTS

If Inverter equals NONE, contact factory for further information

*
N
O
T
E
S
*

INVERTER TORQUE: NONE
INV. HP SPEED RANGE: NONE
ENCODER: NONE
NONE NONE
NONE NONE PPR
BRAKE: PROVISIONS FOR KIT NONE
NONE P/N NONE
NONE NONE
NONE FT-LB NONE V NONE Hz

DATE: 06/27/2017 07:04:39 AM
 FORM 3531 REV.3 02/07/99
 ** Subject to change without notice.



MARATHON ELECTRIC CORPORATION
TYPICAL PERFORMANCE CURVE for AC MOTOR

Customer

Curve at

230 Volts
60 HZ
0.33 HP

HP 0.33

PHASE 1

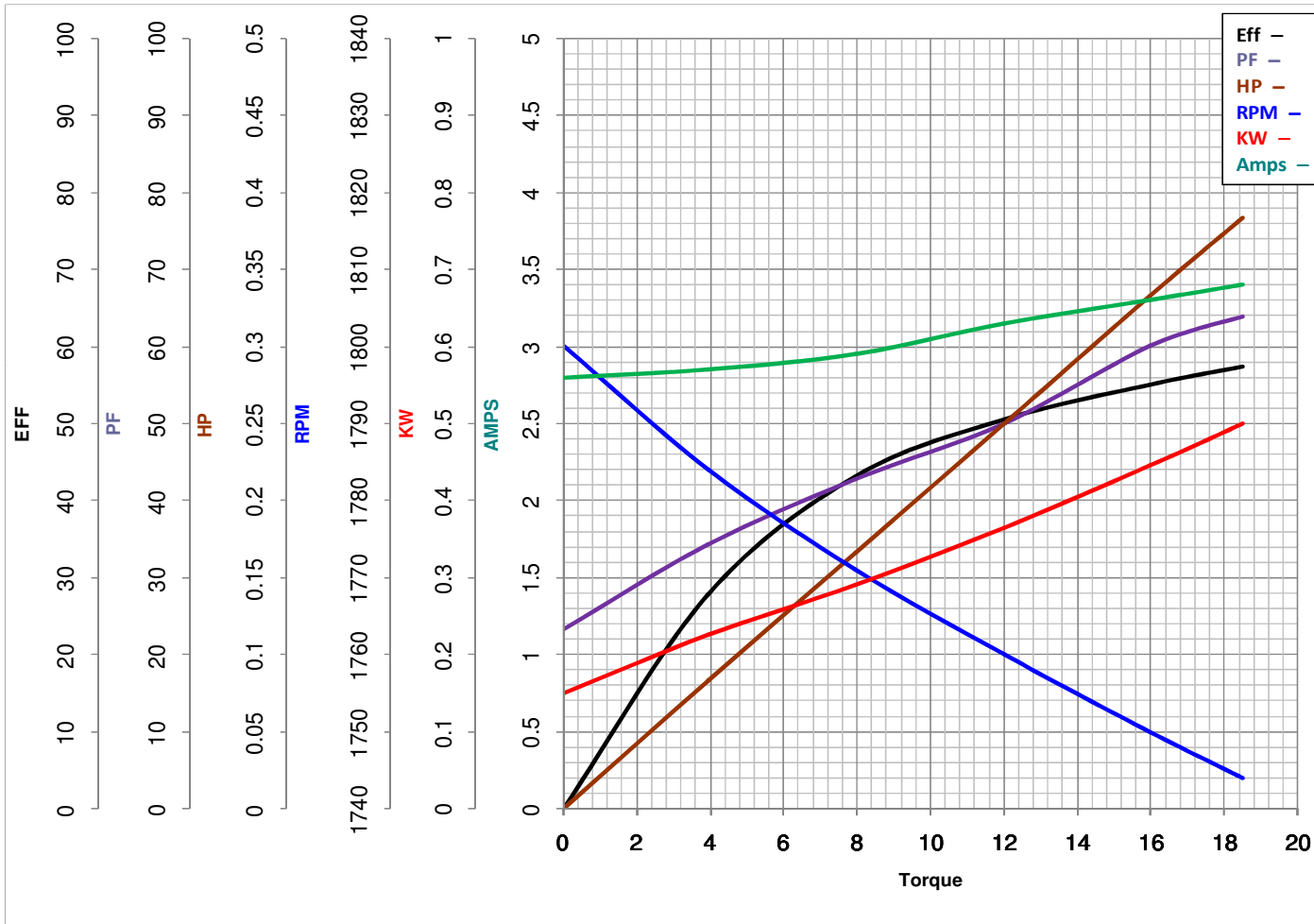
Model No 56C17F5324

VOLTS 115/208-230

Catalog No F101

HZ 60

RPM 1725



Torque in Oz.Ft

FL TORQUE 16 Oz.Ft
BD TORQUE 44.6 Oz.Ft
LR TORQUE 55.7 Oz.Ft

FL AMPS 6.6/3.1-3.3
PU TORQUE 39.9 Oz.Ft
LR AMPS 16.2

WINDING ZC406-3

Date 1/9/2019